

News from Your Partner for Orthopedic Solutions



IAP NOW REPRESENTING ARTHREX VET SYSTEMS TO THE VETERINARY EQUINE MARKET!

Innovative Animal Products is pleased to announce that we now represent **Arthrex Vet Systems to the Equine Market** effective Sept 1, 2010!

We are very excited to help equine veterinarians learn more about IRAP II and ACP products that are fast becoming the popular treatment for soft tissue and orthopedic injuries. If you would like more information about either one of these products please contact your sales rep for more information.

We still have openings at the following lab:

Novel Techniques for Treating Cranial Cruciate Ligament Tears and the Meniscus in Dogs and Cats

Oct 9 – Denver, CO - 10 spots left!

Faculty:

Brian Beale, DVM, Dipl. ACVS, Gulf Coast Vet Spec, Houston
Don Hulse, DVM, DACVS, Texas A&M

See details and register online here: [Arthrex Anchor Lab](#)

This course now includes a KNOTLESS anchor technique using the Arthrex Vet Systems SWIVELock® System, a new extra capsular alternative for dogs over 50 LBS!

Plasma Therapy
ACP and IRAP II

Featured Solution

ACP

Autologous Conditioned Plasma

Autologous blood products have created a growing interest for use in a number of orthopaedic therapies. The healing effects of plasma are supported by growth factors released by platelets. These growth factors induce a healing process wherever they are applied.

Ongoing research in treating equine lameness with platelet-rich plasma (PRP) is showing promising results. The ACP Double Syringe System is a safe and cost-effective system used to prepare PRP from 10 ml of the patient's blood. The beneficial and therapeutic growth factors in the PRP are ready to use within 5 minutes and for a fraction of the cost of competitive systems.

Product Brochure: [ACP Double Syringe System](#)

IRAP II

Autologous Blood Processing System

The IRAP II consists of a dual port, tubular device containing glass beads that maximize the surface area inside the device. Blood that has been incubated in this unique device can be separated to produce autologous serum useful at the point of care. Because the serum is derived from the animal's own blood, the possibility of adverse allergic or anaphylactic side effects is drastically reduced.

Product Brochure: [IRAP II System](#)



Features and benefits

- More affordable, easier to use, and quicker procedure time when compared to other systems
- Requires only 10cc of patient's blood, simplifying blood recovery from the patient
- *In vitro* research has shown statistically improved tenocyte, chondrocyte, and osteoblast proliferation when cultured with ACP vs. controls
- The ACP system does not concentrate inflammatory white or red blood cells, which can negatively interfere with the healing process

Scientific articles:

<http://www.arthrexvetsystems.com/en/mediacenter/scientificarticles/index.cfm>

IRAP II Video:

<http://www.arthrexvetsystems.com/en/mediacenter/animations/>

Instructions for use:

<http://www.arthrexvetsystems.com/en/mediacenter/instructionsforuse/>

New Product Release

Knotless SwiveLock Anchors and FiberTape® Provide our Strongest and Lowest Profile Constructs

Recommended for the following indications:

- CrCL Reconstruction
- Hip Luxation Stabilization
- Collateral Ligament Reconstruction of the Stifle, Hock, Carpus, Elbow and Shoulder
- Biceps Tenodesis
- Achilles and Triceps Reattachment



Features and benefits

- The serum produced by the IRAP II is autologous, which reduces potential side effects or complications associated with other treatment methods
- Blood processing using the IRAP II device produces serum containing anti-inflammatory and anti-degenerative compounds
- The newly designed IRAP II device increases the concentration levels of the beneficial factors in the autologous serum

5.5 mm PEEK SwiveLock Anchor Kit (VAR-2323PSLK)

includes:

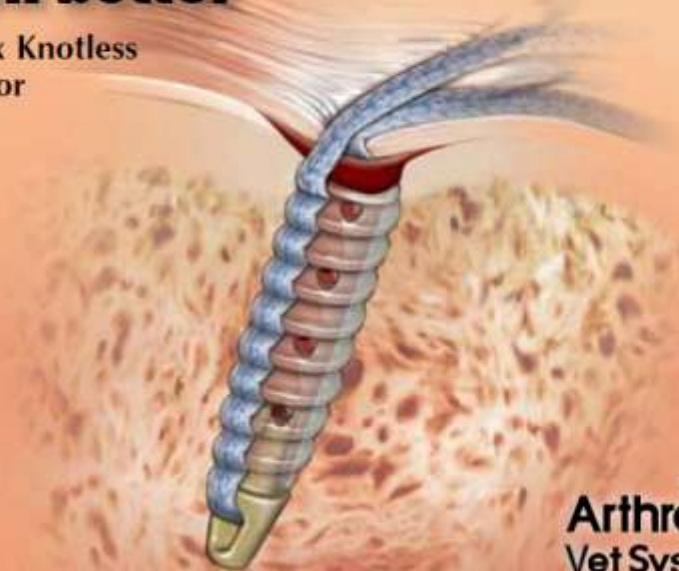
- (5) PEEK SwiveLock Anchors with Driver
- (6) FiberTape Sutures
- (5) Suture Buttons, 3.5 mm

Accessories:

- Punch/Tap for 5.5 mm SwiveLock Anchor AR-1927CTB
- Spade Tip Drill for 5.5 mm SwiveLock Anchor AR-1927D
- Cannulated Drill Bit, 2.0 mm AR-8933-20C
- Guidewire (k-wire), .045 AR-8933K
- Nitinol Wire Passer, 8 inches AR-1255-08

The best line of suture anchors just got even better

Introducing the Arthrex Knotless PEEK SwiveLock® Anchor



Other Orthopedic Solutions

VIDEOS

Arthrex Vet Systems Media Center: Tightrope CCL technique animation along with surgical videos for both the **Tightrope CCL and CCL Anchor Repair Systems.**
www.arthrexvetsystems.com/en/mediacenter

Available:

REFURBISHED ARTHROSCOPY PUMPS AND HAND INSTRUMENTS

Item Number	Description	Price
VAR-11100	PUNCH, SLENDER 2.75MM, STRAIGHT	\$600.00
VAR-11794L	SUTURE CUTTER, OPEN ENDED, LEFT NOTCH	\$600.00
VAR-11794L	SUTURE CUTTER, OPEN ENDED, LEFT NOTCH	\$600.00
VAR-11880	BIRDBEAK PENETRATOR, 2.75MM, STRAIGHT	\$600.00
VAR-11880	BIRDBEAK PENETRATOR, 2.75MM, STRAIGHT	\$600.00
VAR-11890	BirdBeak, 2.75MM, 22 DEGREE UP TIP	\$600.00
VAR-11890	BirdBeak, 2.75MM, 22 DEGREE UP TIP	\$600.00
VAR-12040	PUNCH, WIDEBITER, 3.4 MM STRAIGHT	\$600.00
VAR-12040	PUNCH, WIDEBITER, 3.4 MM STRAIGHT	\$600.00
VAR-12140	PUNCH, WIDEBITER, 3.4 MM STRAIGHT	\$600.00
VAR-12150	SCISSORS, 3.4 MM, R CURVED STR	\$600.00
VAR-12150	SCISSORS, 3.4 MM, R CURVED STR	\$600.00
AR-6400	CONTINUOUS WAVE II ARTHROSCOPY PUMP	\$2,500.00
AR-6400	CONTINUOUS WAVE II ARTHROSCOPY PUMP	\$2,500.00
AR-6400	CONTINUOUS WAVE II ARTHROSCOPY PUMP	\$2,500.00
AR-6400	CONTINUOUS WAVE II ARTHROSCOPY PUMP	\$2,500.00
AR-6400	CONTINUOUS WAVE II ARTHROSCOPY PUMP	\$2,500.00
AR-6400	CONTINUOUS WAVE II ARTHROSCOPY PUMP	\$2,500.00
AR-6400	CONTINUOUS WAVE II ARTHROSCOPY PUMP	\$2,500.00
AR-6400	CONTINUOUS WAVE II ARTHROSCOPY PUMP	\$2,500.00
AR-6400	CONTINUOUS WAVE II ARTHROSCOPY PUMP	\$2,500.00

Instruments are completely refurbished and carry an 18-month warranty which covers replacement at the trade-out cost of \$295. Pumps are completely refurbished and carry a 6-month warranty.** (They use the same main pump tubing as the Wave III, AR-6410 & AR-6411 / AR-6421). **When placing an order for products on this list, please be sure to specify, on the order form, that the product is coming from this list.**



Canine Arthroscopy Set Lease Program

A comprehensive selection of specialty instrumentation to perform arthroscopic procedure on the stifle, elbow, shoulder, and hock. From Arthrex Vet Systems.

Rental: \$400 plus shipping



Arthroscopy Tower Lease Program

Tower includes: Camera, Light source, Monitor, Water Pump, Shaver system, 2.7 and 1.9 scopes.

Rental: \$750 per week plus shipping to and from your clinic

(Reservations required. Allow 2-3 days for shipping to your facility.)



Original Interlocking Nail ® System Lease Program

Average costs per procedure when using the lease program:

Rental of equipment: \$275 - Interlocking Nail: \$73 - Bolts (4): \$60

Overnight Shipping: approx \$60 (actual cost to be determined at time of shipping)

Total cost = approx \$457.00 per procedure

If you use our lease program and then decide to purchase an Interlocking Nail System, the price of the new system will be reduced by \$275.

Lab and Conference Schedule 2010



Tightrope CCL Labs

Date	Location	Exhibit/Lab
Oct 9, 2010	Charlotte	TightRope
Nov 13, 2010	Los Angeles	TightRope

MINIMALLY INVASIVE TECHNIQUE FOR TREATING CCL INJURIES

This laboratory will provide a didactic section covering the principles of the Tightrope CCL materials, a step-by-step presentation of the surgical technique, and presentation of data regarding the clinical results of the technique from a prospective cohort (TPLO) study in canine patients. The laboratory period will include hands-on training in which each person can perform the technique on a cadaveric canine stifle.

To register: www.arthrexvet.com Call 888.551.4394



Anchor CCL Repair System Labs

Date	Location	Exhibit/Lab
Oct 9, 2010	Denver	Anchor

NOVEL TECHNIQUES FOR TREATING CCL TEARS AND THE MENISCUS

This course is a lecture/laboratory experience with the objective of providing in-depth exposure to common rear limb instability problems veterinary practitioners experience in daily practice. Learn and practice the concept, techniques and instrumentation of selected joint stabilization procedures in the canine cadaver pelvic limb. Repair cranial cruciate ligament (CrCL) tears, meniscal injuries, collateral ligament disruption, patellar luxation, tarsal collateral ligament injury using easy-to-learn techniques and the latest specialized implant. This course will cover the isometric sites for suture placement.

To register: www.arthrexvet.com Call 888.551.4394



FIXIN

FIXIN Labs

Date	Location	Exhibit/Lab
Oct 16, 2010	Boston	FIXIN – Locking Supports
Nov 13, 2010	Las Vegas	FIXIN – Locking Supports

INTERNAL FIXATION FEATURING THE FIXIN SYSTEM

The course is designed to introduce the Veterinary Surgeon to the new FIXIN internal fixation system explaining mechanics innovation, instruments, implants, surgical technique, technical errors and possible complications. A series of case histories also shows a selection of clinical cases selected from over 600 applications in four years that highlight the flexibility and simplicity of the system.

For more information and case logs: www.traumavet.it

To register: www.innovativeanimal.com Call 888.551.4394

Have an innovative idea or solution? Need help with product development or marketing? Contact us!!!

Innovative Animal Products

6256 34th Avenue NW
Rochester, MN 55901
888.551.4394
507.281.8110
info@innovativeanimal.com

www.innovativeanimal.com

Exclusive distributor for:
Arthrex Vet Systems
FIXIN™ Locking Plate System

To unsubscribe from this newsletter reply to this email with UNSUBSCRIBE in the subject line.